



# Pasture & Dairy



**Soil Fertility Programs**

**Pasture Improvements**

**Solid & Liquid Fertilisers**

**Foliar & Trace Options**

**Animal Health**

## Productive, Sustainable and Cost Effective **FERTI-TECH CARBON SYSTEMS AGRONOMY**

We pride ourselves on being the best for service, quality and price.

So if you're looking for a better quality farming program with high performance product, at a better price and a better spec.

**Check with Ferti-Tech!**

**Ferti-Tech**



**Phloem  
Effective  
Foliar**

TM



## Welcome to Ferti-Tech Australia

We manufacture and supply quality fertilisers, foliars, supplements, inoculums & many more to ensure the most cost effective & productive farming outcomes.

Ferti-Tech Australia (FTA) delivers **CARBON SYSTEMS AGRONOMY**, a totally sustainable farming science that minimises soil harm and maximises input efficiencies. We have the experience, the expertise and dedicated service to increase your farm profitability without having to sacrifice soil health and fertility.

**Better Soil, Crops and Profit - You Can Measure and See!**



## Step 1 - Better Soil & Fertility Management

### Soil & Tissue Testing for Informed Decision Making

The best pastures are built on an informed understanding of soil physical, chemical and biological principles. We can help you find the right raw materials and supply options for soil balancing, unlocking nutrient, humus formation and beneficial microbial stimulation. Our recommendations maximise the most cost-effective options and can include Lime, Gypsum, Dolomite and Soluble Reactive Carbon. FTA may use prescription soil manufacturing, composting and inoculum alternatives, Urea, MAP, DAP, SOA, Cal Nitrate, Various Sulphates, and a wide range of Trace Elements.

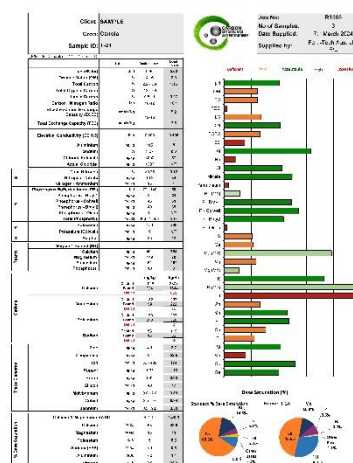
**FTA focus on creating Brix-Rich (sugar) pastures for optimal grazing productivity.**

The Quality always shows in the Sales Yard - High Brix, Nutrient Dense Pastures deliver

- ✓ Faster Weight Gains
- ✓ Less Energy Expenditure
- ✓ Better Rumen Function
- ✓ Stronger Overall Herd Health
- ✓ Improved Resistance to Disease
- ✓ Greater Root Mass and Depth
- ✓ Increased Microbial Activity
- ✓ More Dung Beetles and Earthworms
- ✓ High Water Efficiency/Drought Tolerance



SOIL TEST RESULTS



## Step 2 - Soil & Seed Treatments

### Soil Amendments

Use Lime, Gypsum, Dolomite, Composts, Manures, Reactive Carbon and other inputs wisely. We can give you an excellent understanding of what is needed to improve soil fertility, how much and why. CSA also has options for IN-FURROW soil chemistry and root-rhizosphere chemistry amendments to maximise yield potential at the lowest cost.

**SUPALIME™ (WA) The King of Calciums™** is a blend of highly water soluble (3730ppm) Calcium Hydroxide, Calcium Sulphate and Calcium Carbonate for immediately effective Calcium availability. Supalime releases a fast acting and higher water-soluble Calcium into soil 280X quicker than Lime. Smart, Strong and always Supa-Effective.

**HUMUS COMPOST** (Geelong VIC.) A humus rich compost with stabilised nutrients. Produced at a world class facility that NEVER compromises or rushed the process.

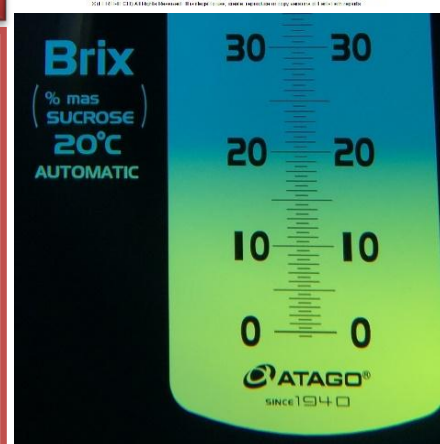
### Physical & Chemical Support

### Ferti-Seed Enhancer

### Broad Spectrum Nutritional Seed Coating

The best value, high analysis and smartest fertiliser decision any farmer can make. Ensure a fast and assured success with Optimal Seed Strike and Grass Growth for 4-6 weeks post emergence. The most cost effective insurance for germination; better root mass and a jump start performance. Ferti-Seed Enhancer stimulates plenty of lateral root growth for stronger anchoring and an earlier progress to new pasture grazing – by several weeks.

Ferti-Seed Enhancer and Soil Amendments provide a Distinct PASTURE QUALITY and ROOT MASS advantage in low or zero fertilizer plans.



**2006 Independent Trials**  
Ferti-Seed Enhancer No 1. for  
Root Surface, Root Mass & Sap  
Phosphorus Productivity



## Step 3 – Carbon Active Fertiliser & Fertiliser Catalysts

### Soil Nitrogen Efficiency & Feed Quality Testing

To remain at maximum efficiency, Nitrogen needs Aerobic Microbes (with soil oxygen), Plant Energy - Sugar (carbohydrate and carbon fuel), Molybdenum (sufficient nitrate reductase enzyme), Optimal Ca/Mg Ratio and Optimal Phosphorus (nitrogenase enzyme reaction).

#### Make the Most of your Nitrogen Fertiliser!

Use it judiciously in smaller applications, more often. Apply it with a chelating, active carbon source. Apply to an aerobically rich (O<sub>2</sub>) and moist soil. Apply it in the most plant efficient forms possible. Promote soil conditions that increase the amount of "Free" atmospheric Nitrogen being fixated. Keep Soil at Optimal Calcium, Phosphorus, Iron and Molybdenum Levels for Best Synthesis. Promote Plant Sugar Dumping and make good use your Brix Meter for monitoring! FTA focus on Nitrogen Efficiency and Long Term Availability. It is not hard or expensive to keep your Nitrogen Inputs (Liquid or Solid) far more soil friendly, plant friendly and in the right forms for Maximum Productivity.

## BIONiK

**BIO-ACTIVE UAN/NITROGEN BUFFER**  
Changes the structure of UAN/ Liquid Urea Synthetic-N to be a carbon-rich composite that mimics Organic-N and is far more efficient as a soil and plant "Naturalized" Nitrogen. No net-loss of Carbon, Soil Structure or Fertility. Stops leaching and volatility. High Lubrication of equipment prevents chemical wear and abrasive damage.



The Specific Microbiology used in **Ferti-Complete** can provide long-lasting Soil Fertility and Nutrition Benefits.

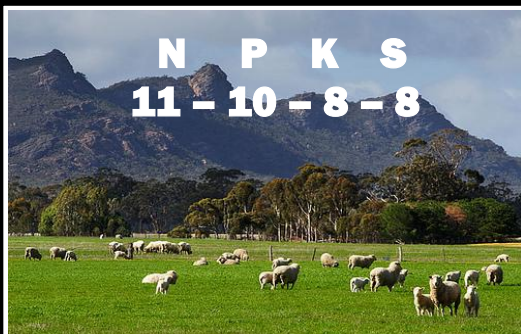
**Lactic Acid Bacteria** For enhanced decomposition.

**Photosynthetic Bacteria** For induced resistance against plant virus, solubilising insoluble nutrients

**Actinomycetes Bacteria** For nutrient availability, enhanced production of metabolites, formation and stabilisation of organic matter, humus and nutrient cycling.

**Mycorrhizal Fungi** For nutrient uptake of soil reserves, pathogen protection, release of several beneficial antibiotics

**Yeast** For promotion of Nitrogen and Phosphorus, nutrient cycling, expansion of beneficial soil biology, disease suppression and water dynamics

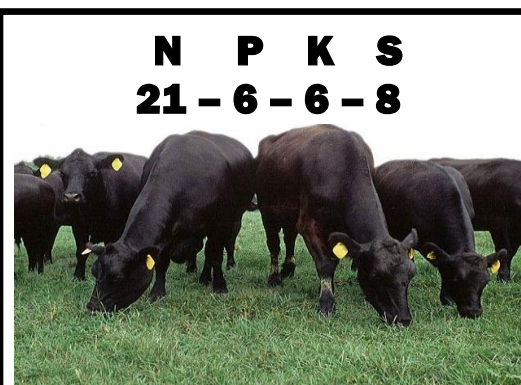


**N P K S**  
**11 - 10 - 8 - 8**

### Ferti-Complete

#### Carbon Active Hi-Analysis Blend

Designed to provide longer lasting N with balanced P, K & Trace Support. Provides a fertile roots systems, microbes, oxygen & water to interact more successfully in a highly productive aerobic environment.



**N P K S**  
**21 - 6 - 6 - 8**

### "New Seasons"

#### Carbon Active Hi-Analysis Pasture & Silage Fertiliser Blend

High Analysis that stays available for longer with Key Traces and Carbon Active support that provides a fertile area for root systems, microbes, oxygen and water to interact more successfully in a highly productive aerobic environment.



**N P K S**  
**19 - 3 - 12 - 6**

### Spring Haymaker

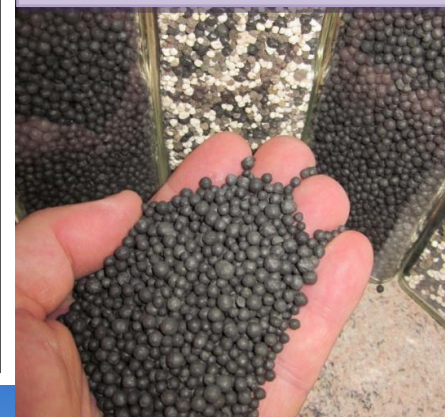
#### Carbon Active Hi-Analysis Pasture & Silage Fertiliser Blend

Spring Haymaker does a lot more than grow a lot of pasture. Unlike other Fertiliser Blends, Spring Haymaker is fully Carbon Active and aids aggregation and conductive balance in the soil increasing space and separation between soil particulates.

### Ferti-Fulvic<sup>tm</sup>

85% Bio-Fulvic Acid 98% Water Soluble Powder

Fulvic Acid has a similar microbial stimulation property to Humates but it also carries the added ability of mixing and chelating far better with liquid fertiliser. Fulvic Acid aids Oxygen Accumulation, Microbial Stimulation, Soil Detoxification, Nutrient Mobilisation, Mineral Solubilisation, Enzyme Facilitation and Increased Plant Respiration.





## Step 4 - Key Foliar & Trace Mineral Options

### Phostrak

Phosphorus, Potassium and Trace Foliar

Designed to provide a chelated high analysis nutritional input for all types of Liquid Fertiliser and irrigation systems. PHOS-TRAK harnesses the upfront strength and energy of Phosphorus in a longer lasting and highly plant available format. Complexed with significant Potassium, Zinc, Manganese and other Trace Elements, PHOS-TRAK also contains modified carbohydrates to ensure a positive soil chemistry and soil microbial action. Liquid Inject and PHOS-TRAK provides Strong Phosphorus for Better Root Formation for growth, energy and respiration, resistance to pests and disease. The Sulphur, Zinc and Manganese (supporting P) also improve chlorophyll production, CO<sub>2</sub> synthesis, root development and sugar build. Uptake of Boron & Moly assists enzyme and amino acid systems & specifically promote Ca and N uptake.

### Ferti-CarbonStar™

All Pasture Foliar Fertiliser



Use Ferti-CarbonStar™ to Maximise Pasture Quality, Sap Nutrient density, and deliver a wide array of vitamins, minerals, nutrients and energy directly into pasture.

This All Purpose formulation is very Complete - Nutrient Dense - Growth Formula that contains natural sugars, acids and plant growth hormones to stimulate larger crown formation and tillering development in grasses and pasture herbage. Ferti-CarbonStar™ has Amino Acids (including Lysine) and Selenium support at Significant Levels.

- ✓ Amino Acids are critical to the proper functioning of life and nutrition. Lysine plays a major role in Calcium absorption and to buffer Nitrogen Burning.
- ✓ Strong with Selenium for improved health, immune function and fertility.

### VigrBoost Soil Drench / Liquid Inject

VigrBoost Chelates and holds nutrients (MAP/ DAP/Urea/ SOA/ SOP) in a loosely charged Carbon bond for plants to easily access nutrition. Maximises fertiliser availability and efficiency. Most useful in cases where poor soil structure, leaching, low nutrient exchange and 'lock-up' or 'lock-out' soil chemistry problems can occur. Use to Buffer Extreme pH, Salt-Affected and Sodic soil profiles. Repairs Soil Fertility problems in season as well as creating a potent soil microbiome for future success.

1. Adjusts Rhizosphere pH to make synthetic NPK uptake more efficient.
2. Strong P levels to help boost early plant growth through energy production, cell division. cell structure.

### Targeted Trace Element Support

Ferti-Tech has developed a complete range of Trace Minerals and Elements for Key Nutritional Foliar Support. Choose from Phloem Effective Calcium, Boron, SuperK33, Copper, Zinc, Manganese, Nitrogen Complex, Magnesium, Molybdenum, Cobalt, Selenium, Silicon, Kelp, Fish Emulsion and Fulvic Acid.

## Focus on Animal Health

### Stocklik Blocks

Ferti-Tech Australia (FTA) Stocklicks are solid 20-22Kg Blocks formulated with plenty of essential Nutrient Support – including Soluble Reactive Carbon for Improved Rumen Buffering and Feed Utilisation. All Blocks are well-blended with Strong Trace Element additions and compressed at over 150 tonnes to be rock hard, set dry and very long-lasting. No waste or water used in the complete FTA Stocklick range.

**Ferti-Tech offers several products that are suitable for use in the bale as a natural tonic or focused supplement. For improved conception rates and fertility we recommend Certified Organic FTA Liquid Kelp and for all-purpose feed utilisation and rumen efficiency FTA RumenACT™**

## Ferti-SprayMate

Simple, Effective and Low Cost  
Fertiliser Adjuvant or a Soil  
Fertigation Aid for use with  
Liquid Nitrogen (UAN)

The Phloem is the all important vascular system that transfers fluid nutrient into the roots, stem, leaves (and grain) for continued growth and development. A truly effective Nutritional Foliar must penetrate the Stomata and Waxy Leaf surface layers, transfer across the Mesophyll to the Phloem and travel up and down through the Phloem Sieve Tubes. Truly Phloem Effective also means providing the right form of Nutrition that does not cause more cellular damage or consume plant energy.

