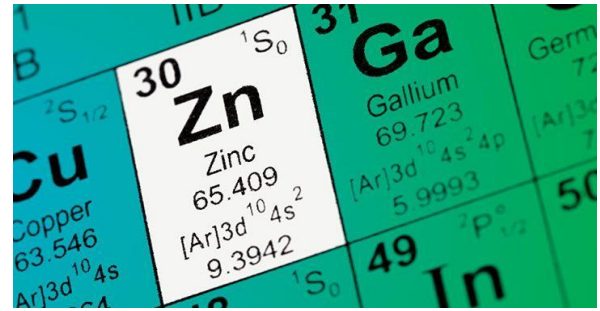




Ferti-Zinc

Ferti-Zinc

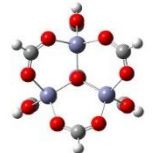
Ferti-Zinc is a Soluble, High Analysis liquid Zinc. Foliar application achieves Rapid Absorption of Zinc, Amino Acids and other essential elements. Zinc deficiencies will show Interveinal Chlorosis, with a light yellow or white necrosis. Often plants that have Zinc shortfalls will sustain severe stunting and will suffer an overall yield and protein penalty. Other symptoms of Zinc deficiency will be shortened roots, loss of flowering, pod development and delayed maturity.



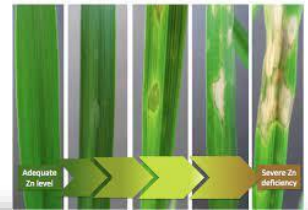
Typical Analysis % w/v

Zinc (Zn)	16.1
Sulphur	8.1

WITH FULVIC ACID, NATURAL CHELATORS & FOLIAR ADJUVANTS



Increase in severity of Zinc Deficiency Symptoms in Wheat



Zinc is a catalytic and structural protein cofactor in hundreds of enzymes and has key structural functions in the protein domains that interact with other molecules. Zinc's essential for promotion of certain Metabolic Reactions and Hormones.

Zinc is also required for the production of Chlorophyll, Carbohydrates, Starch, Sugars and aids in Seed Formation. Zinc also Maintains CO₂ levels for Photosynthesis and plays an Important role in the production of Auxins necessary for Moisture Uptake by roots. Zinc also plays a key role in Plant Defence, as Zinc deficient plants are much more susceptible to disease.



Application Rates:

Broadacre

- Apply 0.5-3 Liters per Hectare.

Horticulture

- Apply 0.5-4 Liters per Hectare

Viticulture

- Apply 0.5-3 Liters per Hectare

FURROW INJECTION

- Apply 3-6 Liters per Hectare