



# Spectrum 12

## Superior Foliar Fertiliser

**Spectrum 12** is a high performance Growth Formulation that quickly delivers essential Nutrition to plants in a wide cross section of soil types. Guaranteed Phosphorus delivery with strong support from Zinc, Manganese, Sulphur and Copper for Optimal Strength, Stress Resistance and Cereal Spikelet Production.

**High Phosphorus** for Stronger Root Formation, Spikelet Length and Number, Growth, Energy and Respiration. Aids in the resistance to pests and disease.

**Emphasis on Sulphur and Manganese** (supporting P) improving chlorophyll production, CO<sub>2</sub> synthesis, Root Development and Sugar Build. Uptake of elements, activate enzyme and amino acid systems and specifically promote P and N uptake. Provides for Optimal Seed Formation.

**Significant Copper** for Protein Synthesizing, Stem Health and Strengthening. Proven fungal disease fighter.

**Strong Level of Zinc** to ensure Optimal Growth Hormone Stimulation, Sugar Production, Protein conversion and Internal Water Holding Ability. Enhanced water holding and water storage in crops is a crucial performance requirement during Final Grain Milk and Fill Production Phase.

**Added Magnesium** for improved synthesis of amino acids, P transfer, enzyme formation and nutrition uptake balance.

**Added Molybdenum** for Improved Nitrogen Efficiency, Conversion and Ammonium Uptake.

**Add 15-30L UAN (p/Ha) to Cart with Spectrum 12. Buffer with Ferti-Fulvic Acid if Water Rates are 60 Litres per Hectare or Lower.**

**Spectrum is compatible with many Ferti-Tech Trace Minerals, UAN and other Liquid N Mixes.**

**N**  
**UNITS**

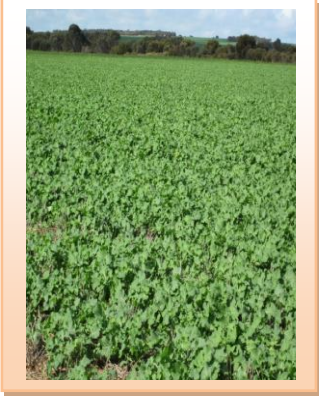


**Spectrum 12 induces a Significant Spikelet Growth Response from the T1 and T2 Tillers that are closer in Size and Yield to the Main Stem**

TYPICAL ANALYSIS	g/L	% w/v
Phosphorous (P)	120	12.0
Zinc (Zn)	70	7.0
Copper (Cu)	20	2.0
Manganese (Mn)	70	7.0
Sulphur (S)	58	5.8
Magnesium (Mg)	6	0.6
Molybdenum (Mo)	2	0.02

**Spectrum 12 is a High Analysis Z.14 Foliar**

Phosphorus and Nitrogen complement each other strongly for Spikelet Initiation and the Number of Spikelets produced. Nitrogen also assists this process to continue when daylight periods become shorter during winter. Phosphorus addition promotes Spikelet Number per Ear, Rate of Spikelet Initiation, Apex Length at Floral Initiation and Leaf Number at Ear emergence. Nitrogen can increase Spikelet Numbers and the final number of grains at Double Ridge Stage. Combine Spectrum 12 with Liquid Nitrogen for the most effective Z.14 Foliar.



**The Window for Z.14 and Z.19 Strategic Foliar Spraying is Critical. Spray Properly at the Right Time for Better Results**



**CAUTION**

**LVE M.C.P.A GROUP I HERBICIDE MIXTURES**

Penoxo Acid broadleaf herbicides will chelate strongly with metal ions. Combining with **Spectrum 12** may 'hot them up'. Experience has shown that the lower rates remain effective and if minor leaf burn occurs to crops it will not be lasting and will not be yield limiting. Always consult your Agronomist.

Treatment	Rate/Ha	Water Ratio
Broad Acre Horticulture	2.0 – 10.0 L	50 – 100 L
Orchards	2.0 – 6.0 L	300 – 1000 L
Viticulture	0.5 – 1.0 L	300 – 1000 L
	0.5 – 3.0 L	300 – 1000 L