



FERTI-TECH



# NITROGEN COMPLEX

## NITROGEN COMPLEX

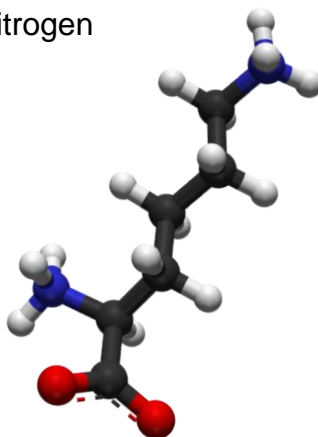
Designed for Maximum Hay Making and Pasture Growth without sacrificing essential Trace Element Support and Carbon Chelated Effective Nutrition. NITROGEN COMPLEX is a high analysis Nitrogen (Calcium Nitrate and Ammonium Nitrate) formula that has carbon rich surfactants and phloem effective adjuvants for best quality performance even in cold, wet and low light conditions.

NITROGEN COMPLEX contains an elevated volume of Bio-Fulvic Acid to increase foliage photosensitivity and supplement several Brix (soluble sugars) building additives. NITROGEN COMPLEX is a multi-faceted foliar offering essential Macro and Trace Nutrition including the significant use of Carboxylic and Amino Sourced Acids for more efficient Calcium and Nitrogen Synthesis at the cellular level.

### Recommended Dosage Rate

- Apply 10-30 litres per Hectare per foliar or fertigation. Refer to FTA for specific uses.
- pH 5.5 SG 1.31 g/cm3.

Always ensure a dilution with water of 10:1 Suitable for use with other Ferti-Tech Nutrition (except Phosphorus based Formulas)

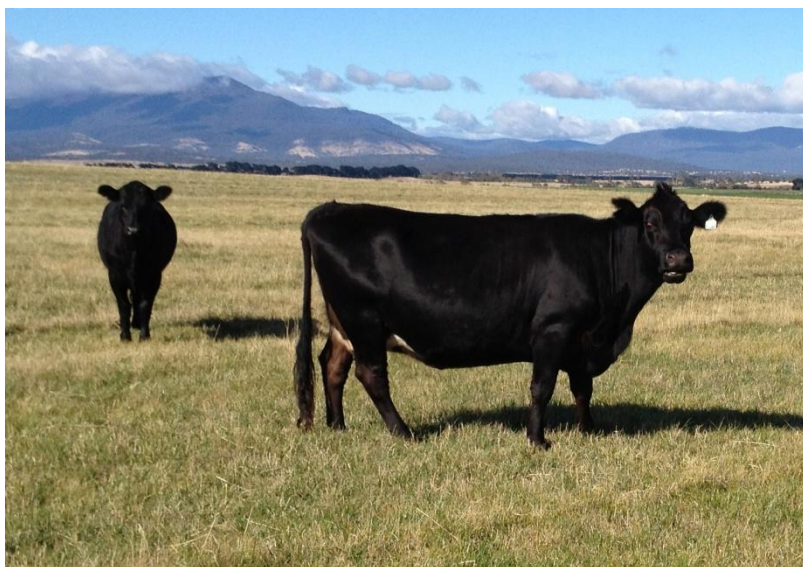


NITROGEN COMPLEX	% w/v
Nitrogen	33.0
Calcium	0.5
Potassium	1.2
Sulphur	0.16
Selenium*	0.025
Magnesium	0.13
Iron	0.006
Copper	0.003
Zinc	0.003
Boron	0.007
Carbohydrates	2.0
Amino Acids	0.07
Bio-Fulvic Acid	2.55
Soluble Humates	1.75

### NITROGEN COMPLEX has Amino Acids (including Lysine)

- Amino Acids are critical to the proper functioning of life and nutritional synthesis. Lysine plays a major role in Calcium Absorption and the synthesis of Nitrogen
- NITROGEN COMPLEX also contains other Amino Acids to buffer Nitrogen Burning and aid Nitrogen Synthesis.

Trace Manganese, Auxins and Gibberilins. \*Sodium Selenite (foliar synthesis to Organic Selenomethionine)



**Grow Better Pasture and Get the Added Bonus of Potassium, Calcium, Magnesium, Selenium, Traces, Carbon & More at the Same Time.**

Complete Nutrition and Growth to pasture with real gains in Productivity, Stock Fertility and Good Herbage Health.

Ferti-Tech Carbon Systems Agronomy

PO Box 9129 PICTON WA 6229 Ph: (08) 9725 6877 Fax (08) 9725 6899 [info@fertitech.com](mailto:info@fertitech.com) [www.fertitech.com](http://www.fertitech.com)